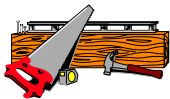
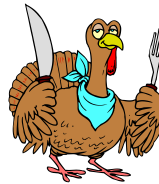
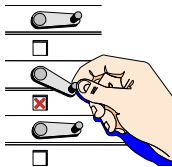


SPARTANBURG SKI & OUTING CLUB



Nov. 2nd: Club Meeting
Habitat for Humanity



Nov. 3-5: CSC Fall Conference
Asheville, NC



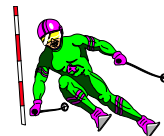
Nov. 8th: Mini-Social at Gooney Bird's



Nov. 10-12: Hickory Knob Golf Week-End



Nov. 26th: Development Training
Appalachian Ski Mountain



NOVEMBER 2000

<http://www.geocities.com/Pipeline/6821>

Ted's Corner

The Special Olympics is coming to Spartanburg for their fall games. The games will be held on November 3 to 5 at Wofford College so you will have just enough time to volunteer. They need people for everything from computer operators to award presenters. If you are interested call Jane Warner at 582-4376.

Thanks to the members that volunteered at the International Festival. It was in conflict with the Smokey Mountain Train excursion so I'm glad that there were enough people to volunteer and keep us eligible for next years Music on Main our main fundraiser.

Speaking of the Smokey Mountain Train excursion, it was a real fun trip. The scenery was wonderful and the weather was perfect. This will definitely have to be an annual event.

We had a great speaker at the last membership meeting, Jim Cottrell of Appalachian Ski Resort. He did a great job explaining the differences between conventional skis and the new shaped skis, just in time for the ski season.

Don't forget that ski season is rapidly approaching and that the club needs your support for the race team. Mark McCall is race director this year and he is looking for racers. Racing not only lets you support the club but also adds to your skiing ability. Let Mark know if you would like to participate.

The Crescent Fall Conference will be held in Asheville, November 3 to 5. Give me a call if you like to attend or need additional information. The price has come down for the conference and additional workshops have been added.

PRW Sports Luggage has some good deals on ski luggage such as ski bags, boot bags, etc. If you would like more information come to the next membership meeting.

Ted

DON'T MISS OUR NOVEMBER 2
MEMBERSHIP MEETING
7:30 at the ARTS CENTER

Dr. DeLuca from Habitat for Humanity
with ideas about what we can do to help
(both physically and financially)



Bring gifts to our December 7 meeting to share with DSS clients (both the young & the elderly).

Santa will make a special appearance if we are very good.
I'm told he may bring wine & cheese.

We will also have our annual Chinese Auction, so find a gift for another ski club member.

Start Shopping Now! Start shopping Now!



Ellis, An American Bistro
Spartanburg Ski & Outing Club Christmas Party,
2000!

Friday, December 8 at 7:00 pm

We have a private room reserved for the occasion and Chef Mitchell and I are working on a special menu for this celebration. We will meet for cocktails upstairs around 7:00, followed by dinner in the "Vault" at 8:00. Please sign up at the November meeting. I need to give an accurate headcount before our December club meeting.

Hope to see you all there.

Your Social Director,

Alison



Professional Ski Repair @
ALPINE SKI CENTER



- *Tune-ups
- *Mounting
- *Repair
- *Snow-Board Service
- *Tender love & care

***We may not look pretty
but your skis sure will***

Make Alpine your ski shop
 2104 Augusta St, Greenville- 241-0550

Jones Gap Hike

When? Saturday, November 18th.
Where? **Jones Gap State Park, SC Highway 11**

If your interested in taking a two to three hour hike please contact me @ 592-3405.

We're planning on meeting at 10AM at the park so be sure and pack a picnic lunch.

If we do not have enough interest this event may be cancelled so please call me ASAP.

Conni

Gates®

WE

DELIVER

PERFORMANCE

2000

GET YOUR GATES AT **ALPINE SKI CENTER**

GREER

HEATING & AIR CONDITIONING CO., INC.

JAKE GREER — LEE GREER
SPARTANBURG SC - 30 YEARS EXPERIENCE

LENNOX

RESIDENTIAL • COMMERCIAL

HI-EFFICIENCY

HEAT PUMPS • GAS FURNACES

AIR CONDITIONING

SALES • SERVICE • INSTALLATION

WE SERVICE & REPAIR ALL BRANDS

24 HOUR EMERGENCY SERVICE

FINANCING AVAILABLE

STATE LICENSED • BONDED • INSURED



ASK ABOUT OUR GUARANTEED PRICING!



576-7000



This gift certificate is redeemable for \$20 off your first service call or \$100.00 off the purchase of a new heating and a/c system.

Ron Scott
Race Director
Sponsorship Director
W 919/515-6752
H 919/362-5689
rscott@eos.ncsu.edu
ronski@att.net

2000/2001 Crescent Ski Council Race Schedule

November 26, 2000	<i>CSC Development Training at Appalachian 8:45</i>
December 2-9, 2000	<i>Steamboat Race Camp Call L.T.A 704 332 1090</i>
December 2000	<i>Killington Race Camp Call 802 422 6797 800 432 0100</i>
December 10, 2000	<i>CSC Development Training at Appalachian 8:45</i>
December 8-10, 2000	<i>Sugar Mt. Race Camp Call Kim Jöchl 828 898 4521 x224</i>
January 28, 2001	<i>CSC Development Training at Hawksnest 8:45</i>

Race Format - Two runs of Slalom on Saturdays and two runs of Giant Slalom on Sundays

December 16 & 17, 2000	Appalachian, NC Race	9:30
January 5, 6, & 7, 2001	SilverCreek, WV Race	9:30
January 20, 2001	Hawksnest, NC Race	Slalom 9:30
January 21, 2001	Beech Mt., NC Race	GS 9:30
Jan. 27 – Feb. 3, 2001	SKI WEEK LAKE LOUISE/BANFF, CANADA	
Feb. 4 & Feb. 5, 2001	Cupp Run Challenge at Snowshoe, WV	
February 10 & 11, 2001	Sugar MT., NC Race	9:00
February 24, 2001	Canaan Valley, WV	Slalom 9:30
February 25, 2001	Timberline, WV	GS 9:30
February 25, 2001	Sugar Cup Slalom Sugar Mt., NC Call Sugar Mt.	
March 9,10, & 11, 2001	Crescent Cup, SilverCreek, WV	9:30
March 10, 2001	Subaru Race at Snowshoe, WV	TBA
March 17 – 24, 2001	SKI WEEK SUNDAY RIVER, MAINE	

DEADLINES FOR 2000-20001 CRESCENT RACE/SKI WEEKENDS

Again, this year clubs will be assessed a \$10.00 fee for EACH missed deadline. These club deadlines are set as close to resort deadlines as possible to allow you as much time as contracts allow Crescent. We continue to receive payment late and are left no choice in charging late fees.

Below is a list of deadlines you are expected to meet. Each club has the potential for \$50.00 in late fees for each weekend. Envelopes will be kept on file to verify postmark dates. If there are questions the club Trip Leader should contact the Crescent Trip Leader.

TRIP	INFORMATION DUE	DUE DATE
Silvercreek I	Confirmation form	November 1 st , 2000
Silvercreek I	50 % deposit	November 15 th , 2000
Canaan Valley	Confirmation form	November 15 th , 2000
Canaan Valley	50 % deposit	November 30 th , 2000
Silvercreek I	Balance	December 15 th , 2000
Silvercreek I	Room list	December 15 th , 2000
Silvercreek I	Room changes	December 27 th , 2000
Canaan Valley	Balance	January 3 rd , 2001
Canaan Valley	Room list	January 3 rd , 2001
Silvercreek II	Confirmation form	January 3 rd , 2001
Canaan Valley	Room changes	January 14 th , 2001
Silvercreek II	50 % deposit	January 14 th , 2001
Silvercreek II	Balance	February 11 th , 2001
Silvercreek II	Room list	February 11 th , 2001
Silvercreek II	Room changes	February 20 th , 2001

North Carolina due dates need to be met; however these are made by individuals or a club's race director and will not be penalized.

RACE DATES	INFORMATION DUE	DUE DATE
December 16 th -17 th , 2000	Block Rooms	ASAP
December 16 th -17 th , 2000	50% deposit	At time of reservation
December 16 th -17 th , 2000	Balance(check-out)	December 17 th , 2000
January 20 th -21 st , 2001	Block Rooms	ASAP
January 20 th -21 st , 2001	50% deposit	At time of reservation
January 20 th -21 st , 2001	Balance(check-out)	January 21 st , 2001
February 24 th -25 th , 2001	Block Rooms	ASAP
February 24 th -25 th , 2001	50% deposit	At time of reservation
February 24 th -25 th , 2001	Balance(check-out)	February 25 th , 2001

Ski or Snowboard Jamboree

French-Swiss Ski College at Appalachian Ski Mtn., Blowing Rock, N.C.,
is offering special weekend packages
for as low as \$79 per person.

COST PER PERSON

SKIERS/BOARDERS

\$79/\$103	4 Per Room
\$84/\$108	3 Per Room
\$94/\$118	2 Per Room
\$134/\$158	Single

HOUSING ONLY OR EXTRA NIGHT

\$25	4 Per Room
\$30	3 Per Room
\$40	2 Per Room
\$80	Single

DATES

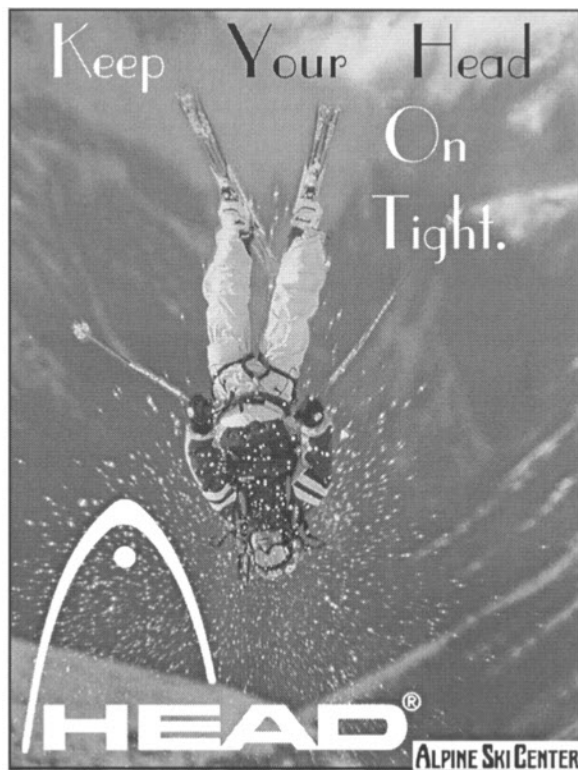
**Dec. 9th & 10th & Dec. 16 & 17, 2000 OR
Mar. 10th & 11th & Mar. 17 & 18, 2001**

- Cost includes slope tickets, rental equipment (skis, boots, poles or snowboard & boots), one hour group lesson for Sat. & Sun. (9 am-4 pm), (all ability levels, ages 6 & up), and Saturday night lodging at Quality Inn, Boone.
- No minimum numbers required.
- Prepayment required 30 days in advance by check or money order, (**no credit cards accepted**); fully refundable with 7 day notice.
- Fill out the form below to reserve your space.
- Please allow one hour preparation time after arrival. Add 20 minutes if renting clothing.
- Lesson Times: 9:30 a.m., 10:45 a.m. & 1:30 p.m.

MAIL OR FAX TO:

SKI FRENCH-SWISS, P.O. DRAWER 1250, BOONE, NC 28607 828-963-7792 FAX: 828-963-2760

Leader _____ # Adults _____ # Jr. (12 & Under) _____
Group Name _____ Arrival Time _____
Address _____ City _____ State _____ Zip _____
Daytime Phone _____ Home Phone _____
Ski Jamboree Weekend Desired _____ # of Rooms Required _____



SUGAR MOUNTAIN RESORT'S
2000
PRESEASON ADULT
SKI/SNOWBOARD CLINIC

December 8-10, 2000

World-Class Instruction
and a whole lot more!!!



WWW.SKISUGAR.COM

Camp Includes:

- Three-day lift ticket
- Coaching fees
- Video analysis
- All day intensive instruction
- Saturday or Saturday (TBD)
night gathering and dinner

Who should come?

Any male and/or female adult
interested in improving his/her ski-
ing/snowboarding ability.

Why should you come?

Sugar Mountain has the most
diverse teaching and coaching staff in
the Southeast. We are excited and
look forward to helping you improve
your skiing and snowboarding ability.

Cost

All three days \$200

one day \$75



Crescent Race Workshop \$49

Workshops are offered by
FRENCH-SWISS SKI COLLEGE at Appalachian
Ski Mtn. The \$49 price includes
Ski Ticket, Workshop and
Crescent Development Race Handicap.

November 26th or December 10, 2000

*Please be at Appalachian Ski Mtn.
at 9 a.m. so we can start promptly.
Grouping with instructors will be at 9:45 a.m.*

Get Ready To Race Run gates, receive individual feedback,
participate in fun races. Run more gates.

Gates, Gates, Gates Gates, gates and more gates, timed runs
and mock races. Emphasis on running courses, not instruction.

RESERVATIONS ARE REQUIRED

FRENCH-SWISS SKI COLLEGE DRAWER 1250 BOONE, NC 28607 828-963-7792 FAX 828-963-2760

Please register me for the 2000 Race Workshop. Enclosed is my check for \$49. I understand that the fee is 100% refundable with 24 hour notice. Each workshop is limited to the first 40 paid registrants.

GET READY TO RACE _____ GATES, GATES, GATES _____

(Check preferred Workshop)

NOV. 26, 2000 _____ DEC. 10, 2000 _____

(Check preferred date(s))

NAME _____ PHONE # _____ SKI CLUB _____

ADDRESS _____

CITY _____ STATE _____ ZIP _____

Meet the Board

This is the second edition of bios of board members for those of you that don't know the board members that well. We will continue this until all the board members have been introduced.

Barbara Rogers - Barbara is originally from Elkin, NC. She has lived in Spartanburg since 1980. She attended Furman University where she met her husband Mike. Barbara says "this was the only good blind date I ever had". Barbara has a teaching degree in music and taught grades 5-7 for 30 years. "I taught 8th grade boys for 27 years and that's what's wrong with me today", Barbara says. Barbara retired from teaching and is now employed at Liberty Life in account services. Barbara and Mike have a house at Sugar Mountain where they spend most of their weekends. She is an animal lover and has three dogs.

Barbara has held many board positions. She loves skiing, golf, dining out and word puzzles. Music interests includes classical before 1870 - the non-junk stuff she says - some jazz and some country. Her favorite book and movie is "To Kill a Mocking Bird".

Carol McCall - Carol is originally from northeast Connecticut. She attended Smith College in Massachusetts and worked in Albany, New York and later moved to Chapel Hill where she met Mark McCall at a ski club meeting. She is an avid skier and one of the true ski bums in the club. She even turned down a date with Mark to go skiing. Carol attended the first opening day at Sugar Mountain. She never learned to ski while living in the northeast.

Carol is into horses, hiking, backpacking and horse shows. She works part time at Marks dental office and enjoys singing in the local chorus. She has two children and two grandchildren.

Alison Kimball - Alison is originally from Staunton Virginia and moved to South Carolina when she was five. She has lived in far off places like Pakistan, Finland and England. She attended Converse College where she got a degree in early childhood and elementary education. Alison hit the road after graduating and lived in New Hampshire, Massachusetts, Colorado, Wisconsin and Virginia. She moved to Spartanburg in 1991 and joined the ski club. She is a past president and has held numerous board positions.

Alison's interests lie in skiing, camping, hiking and other outdoor activities. She has two cats and a dog, lives in Boiling Springs and works for USCS.

Doug Tinsley - Doug is another board member originally from Spartanburg. While attending Wofford Doug met and married Martha. After graduation he went into the Army where he served a year in Viet Nam and two and a half years in Germany. He's been to three Oktober Fests. Doug and Martha have been married for 35 years and have two children and two grandchildren.

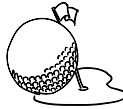
Doug owns a truck dealership in Spartanburg. He is interested in skiing, Wofford football, golf, dining out and spending time with his grandchildren. Doug is a past president of the club and has held most of the board positions.

ANY GOONEY BIRD'S OUT THERE?

Come join us on Wednesday, November 8 at 6:30 pm for dinner and a good time. Gooney Bird's Sports Grille is located at 2725 Reidville Road. Sign up at the November club meeting, call (814-5372) or e-mail me (KimballA@msn.com) if you want to attend our monthly social.

What better place for us to be!





HICKORY KNOB STATE PARK
FRIDAY & SATURDAY NIGHTS
NOVEMBER 10-12, 2000

We have 10 rooms reserved for our annual golf/boating trip to Lake Thurmond.

The room rate of \$50.00 per night includes lodging, buffet breakfast, cart fee, and green fee for their beautiful and challenging course. This rate is based on double occupancy. The rate for a non-golfer staying with a golfer is \$30.00 per night and includes the buffet breakfast.

Sheila Haynes has made plans for a cultural excursion to the Abbeville Opera House. The Haunting of the Hill will be playing. Please contact Sheila if you have an interest in journeying to Abbeville.

Del Haynes will be devising a game of golf. We have morning tee times for Saturday and Sunday. Please contact Del to sign up for golf.

We will take sign-ups at our September membership meeting. A \$50.00 deposit for each person will hold your spot with the balance due by October 15, 2000.

Please contact Del, Sheila, or me if you have any questions.

Mike Rogers (H) 578-0618 (O) 848-6514
Del and Sheila Haynes 592-0047

Membership News

This is another reminder for members who have not renewed their memberships for the coming year. Officially membership expires at the end of September. If you wait too long you will have to pay a new membership fee that is higher than your renewal fee. Don't miss out on the fun for next year. **Renew now.**

Two new members have joined the Ski and Outing club last month. **Joe and Abby Clay** moved to the upstate from Myrtle Beach two years ago. Joe works for Fallon Luminous Products a neon sign manufacturer for large industries and Abby retired from the Travel Industry. They lived in Malaysia for four years. Both Joe and Abby are non-skiers. Joe is into golf big time (maybe Del will get some competition) and Abby likes to play cards, games and go shopping. Abby recently visited Austria where she took a "sound of music" tour, her favorite movie. They have two sons and two grandsons. Joe and Abby came to the Ski and Outing club by way of the Newcomers Club.



SNOWMASS FEBRUARY 3-10,2001

Don't be left out! Plan Ahead!

We have had a fantastic early sign-up for our western ski trip for 2001.

We have 42 spaces available at Top of the Village condos at Snowmass Village. These are deluxe 3 BR/3BA units and are true ski-in/ski-out. The condos are located on a green slope (Fanny Hill).

Air transportation is from GSP to Vail/Eagle Airport. Ground transportation will be by motorcoach to Snowmass which is 70 miles away.

Air, lodging, and ground transportation are all included for total cost of \$1,122.00. Land only is \$693.00. (An optional \$8.00 baggage transfer is available and **I WOULD HIGHLY RECOMMEND THIS ADDITIONAL SERVICE.**

As usual we will "throw in" some additional goodies as well as an optional NASTAR race.

If you are arranging your own air, I would suggest you do this **now**. If you need our flight schedule, call me.

I hope everyone who is considering this trip will send in their deposit soon. I don't want to see our club members left out. I previously sent sign-up forms. I do have extras. Please call me for forms and any additional details.



WORK ON THAT CHILI RECIPE

CHILI COOKOFF
JANUARY 4
MEMBERSHIP MEETING



We had a really good turn out at the Haus Heidelberg last month. Seventeen club members met for dinner and good beer. We had a guest visit from Jill who was visiting Mike & Barbara (who, by the way, were served the diet plate of 1 piece of lettuce and a little tomato slice ... you had to be there). Our most authentic club member was little Aksel Wagner who showed up in lederhosen (sp.?)!

The best part of the evening was trying to pronounce all those beers. What was it we were drinking? Dinkeldorfanloppers?!?!?!?

Thanks to those who made the drive up to Hendersonville.

Alison



SPARTANBURG SKI & OUTING CLUB
BOARD OF DIRECTORS
2000-2001

POSITION	NAME	HOME PHONE	WORK PHONE
PRESIDENT	TED MUELLER	592-3405	433-2220
PAST PRESIDENT	JOY BOBO	433-0802	
VICE PRESIDENT	DEL HAYNES	592-0047	
TREASURER	SHELIA HAYNES	592-0047	
SECRETARY	CHARLES DARLING	574-0376	
MEMBERSHIP	TED MUELLER	592-3405	433-2220
ADVERTISING	PAT PARKER	585-5585	433-2460
PUBLICITY	MARCY CASSADY	585-1718	596-3114
FUNDRAISING	BRYAN BOBO	433-0802	433-8640
NEWSLETTER	TAYLOR BOMAR	576-3776	574-7245 x105
PROGRAMS	BARBARA ROGERS	578-0618	
SOCIAL	ALISON KIMBALL	814-5372	503-5900
DAY TRIPS	JOY BOBOs	433-0802	
CRESCENT OVERNIGHT	CAROL McCALL	828-859-5500	
OVERNIGHT TRIPS	MIKE ROGERS	578-0618	848-6514
RACING	MARK McCALL	828-859-5500	828-859-5839
SCRAPBOOK	DOUG TINSLEY	579-1051	
SPECIAL EVENTS	CONNI HARRELL	592-3405	
	HERB LINDSAY	576-0322	

SPARTANBURG SKI & OUTING CLUB
PO BOX 2864
SPARTANBURG, SC 29304

